

АЛТ

ЭТА НОЧЬ СРЕДИ ДРУГИХ СОБЫТИЙ

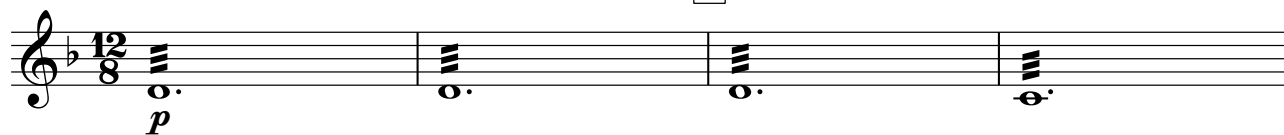
Галина Александровна Везикова

Инструментовка Д. Шевернёва

Arranžeerija Ernest Elnathan

Andante $\text{♩} = 75$

1



5



9

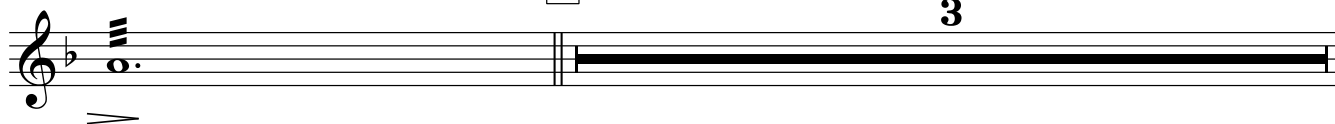
poco rall.



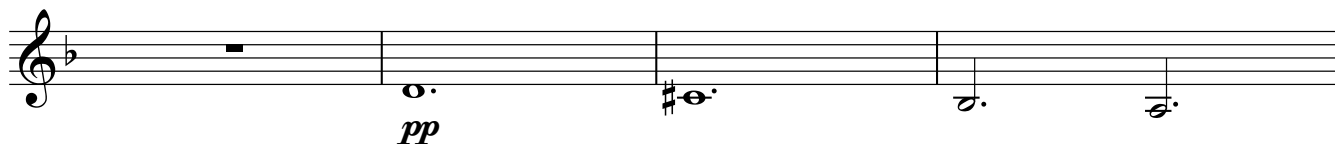
13

2 Tempo primo

3



17



21

3



25



29

4

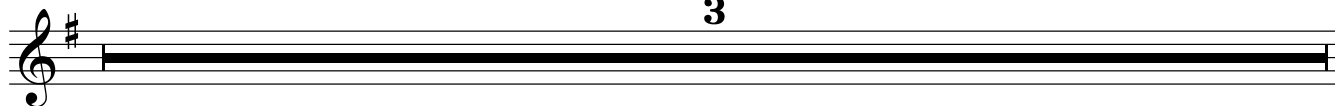


32

3



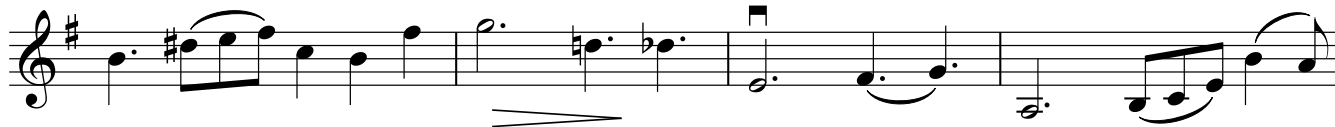
35



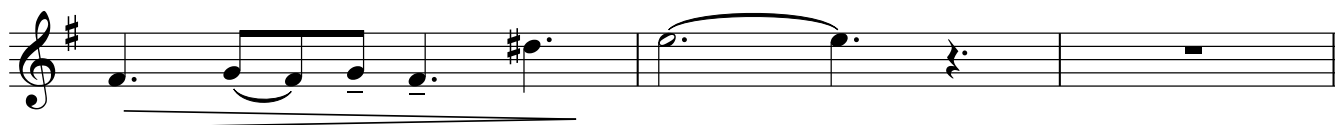
38



41



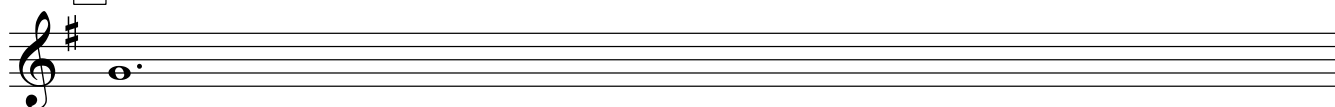
45



48



56



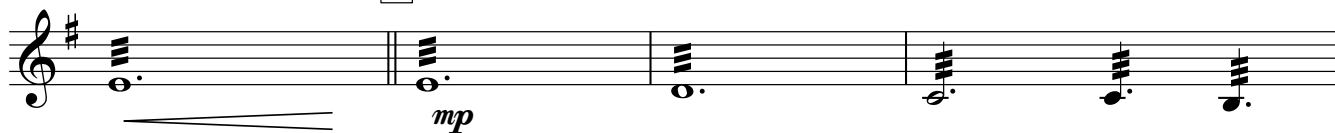
57



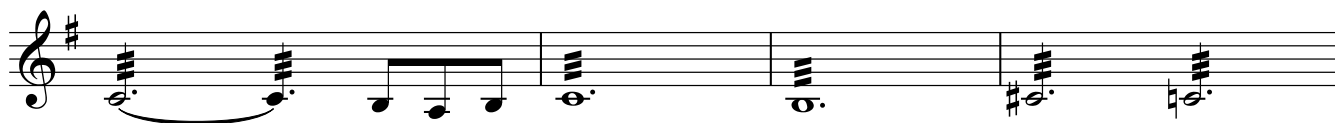
61



65



69



73



АЛТ
9

3

76

9

3

The musical score for 'The Rose Tree' is written on a single staff. It begins with a treble clef, a key signature of three sharps (F#, C#, G#), and a common time signature (C). The melody starts on a whole note G5, followed by a half note F#5, and then a half note E5. The piece concludes with a double bar line. Above the staff, the number '76' is positioned at the beginning, and the numbers '9' and '3' are placed above the final measure, indicating the total number of measures and the number of measures in the final phrase, respectively.

80

pp


84 10

Measures 84-86 of the score. Measure 84 contains a half note G4 and a half note A4, tied together. Measure 85 contains a half note B4 and a half note C5, tied together. Measure 86 contains a whole note D5. The key signature is one sharp (F#). The dynamic marking *p* is present below the staff.

87



91 11



p

94 **rall.**

94 **rall.**