

ЭТА НОЧЬ СРЕДИ ДРУГИХ СОБЫТИЙ

Контрабас

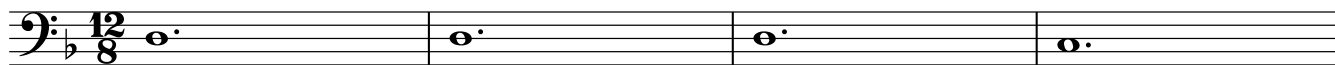
Галина Александровна Везикова

Инструментовка Д. Шевернёва

Arranžeerija Ernest Elnathan

Andante ♩ = 75

1



pp

5



9

poco rall.



13

2 **Tempo primo**

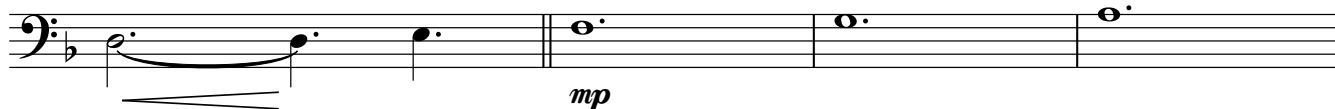


17



21

3



25



29

4



32



35

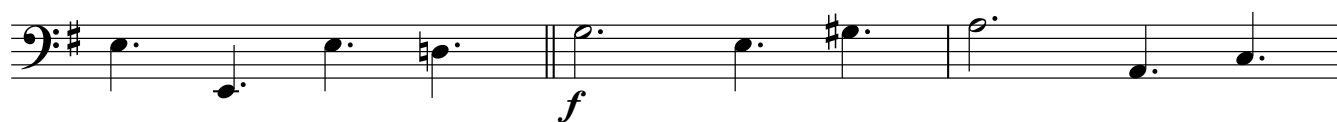


2

38

5

Контрабас



41

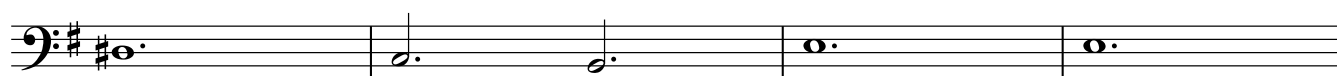


45

6



49



53

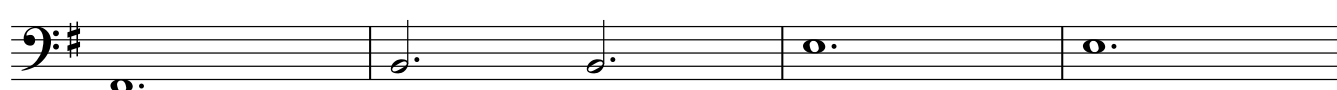
7



57

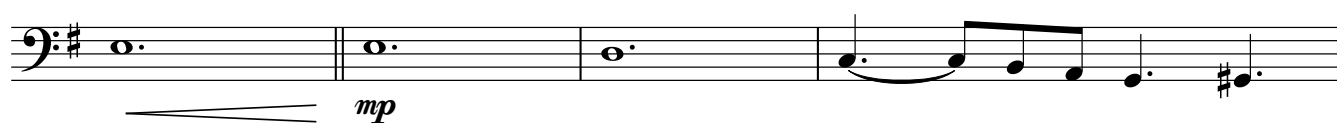


61

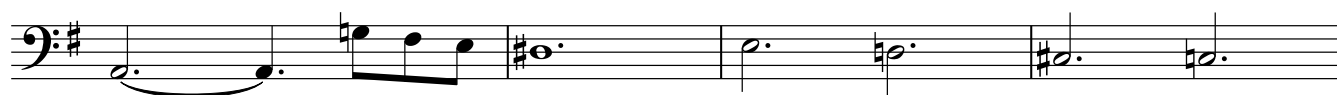


65

8



69

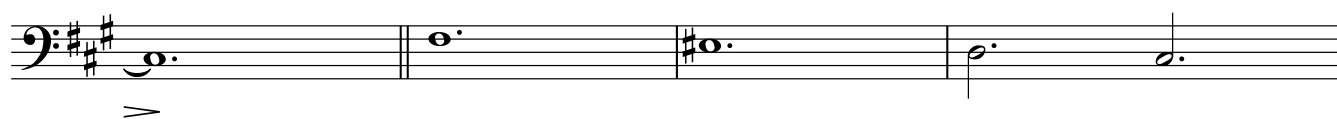


73



76

9



3

10

[illegible]

The bass line of 'The Rose Tree' is written in G major (one sharp) and 2/4 time. It consists of the following notes: G2 (half note), A2 (half note), B2 (half note), C3 (half note), D3 (half note), E3 (half note), F#3 (half note), and G3 (half note). The notes are grouped into four pairs, each with a slur above it.

11

rall.

The bass line is written on a single staff in bass clef with a key signature of one sharp (F#). It consists of four measures: the first measure contains a half note G2, the second a half note F#2, the third a half note E2, and the fourth a half note D2. A fermata is placed over the final D2 note.