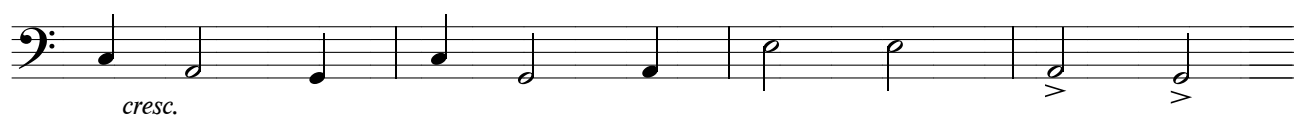
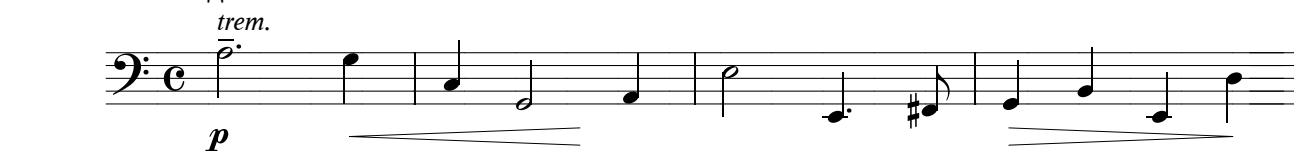


Балалайки  
Басы и  
Контрабасы

СТРАШНО БУШУЕТ ЖИТЕЙСКОЕ МОРЕ

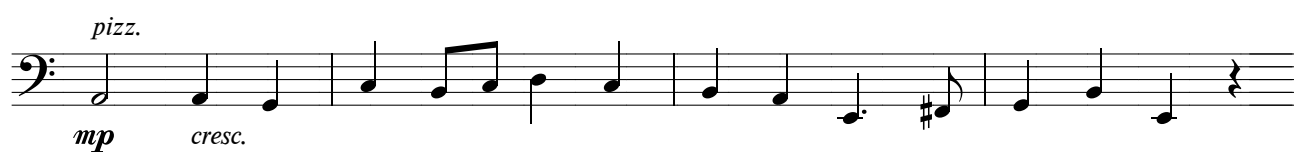
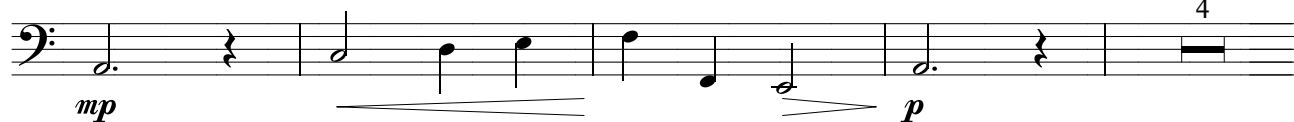
Медленно



1



2 Сдержанно  
4



3



[illegible]

4

The bass line is written on a single staff in bass clef. It begins with a forte (*ff*) dynamic marking. The melody consists of eighth and quarter notes, with a final measure containing a half note and a whole note, both marked with a decrescendo hairpin.

5

6

[illegible]

The first staff of music is written in bass clef. It begins with a piano (*p*) dynamic and a crescendo (*cresc.*) marking. The melody consists of a series of eighth and quarter notes, starting on G2 and moving generally upwards, ending on a half note G2.

7

The first staff of music is in bass clef and begins with a forte (*f*) dynamic marking. It contains a sequence of notes: G2 (quarter), F2 (quarter), E2 (quarter), D2 (quarter), C2 (half), B1 (quarter), A1 (quarter), G1 (quarter), F1 (quarter), E1 (quarter), D1 (half), and C1 (half).

[illegible]