


Full Score

Partitura-MIDI

[illegible]

10



18

The musical notation for Example 18 is written on a single bass staff. It begins with a series of three eighth rests followed by an eighth note G₂. This is followed by a quarter note F₂, an eighth note E₂, and a quarter note D₂. The next measure contains a half note C₂ and a quarter note B₁. After a double bar line, there is a dotted half note A₁, followed by a quarter note G₁, an eighth note F₁, and a quarter note E₁.

23 

29



Measure 29 (bass clef): The melody continues with a series of eighth and quarter notes, including a triplet of eighth notes in the fifth measure.

36

36

[illegible]

53



60

pizz.

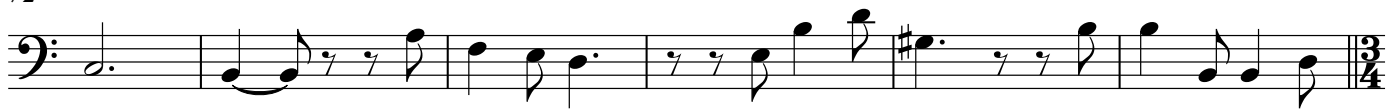


66

arco



72



78

3

 \varnothing
pp

90

rit. _ _
pizz.

pp



99 -

