

Piano

ВОТ МИНУТА НАСТАЁТ

A. Геллерт

Arranžeerija Ernest Elnathan

Andante ♩ = 85

1

Measures 1-5 of the piano piece. The key signature is one flat (B-flat). The time signature is common time (C). The tempo is Andante, with a quarter note equal to 85 beats per minute. The first measure is a whole rest in both staves. The second measure features a piano (p) dynamic, with a chord of B-flat, D-flat, and F in the right hand and a whole note B-flat in the left hand. The third measure has a chord of B-flat, D-flat, and F in the right hand and a half note B-flat in the left hand. The fourth measure has a chord of B-flat, D-flat, and F in the right hand and a half note B-flat in the left hand. The fifth measure has a chord of B-flat, D-flat, and F in the right hand and a half note B-flat in the left hand.

6

Measures 6-10 of the piano piece. The key signature is one flat (B-flat). The time signature is common time (C). The tempo is Andante, with a quarter note equal to 85 beats per minute. The sixth measure has a chord of B-flat, D-flat, and F in the right hand and a half note B-flat in the left hand. The seventh measure has a chord of B-flat, D-flat, and F in the right hand and a half note B-flat in the left hand. The eighth measure has a chord of B-flat, D-flat, and F in the right hand and a half note B-flat in the left hand. The ninth measure has a chord of B-flat, D-flat, and F in the right hand and a half note B-flat in the left hand. The tenth measure has a chord of B-flat, D-flat, and F in the right hand and a half note B-flat in the left hand.

11

2

Measures 11-14 of the piano piece. The key signature is one flat (B-flat). The time signature is common time (C). The tempo is Andante, with a quarter note equal to 85 beats per minute. The eleventh measure has a chord of B-flat, D-flat, and F in the right hand and a half note B-flat in the left hand. The twelfth measure has a chord of B-flat, D-flat, and F in the right hand and a half note B-flat in the left hand. The thirteenth measure has a chord of B-flat, D-flat, and F in the right hand and a half note B-flat in the left hand. The fourteenth measure has a chord of B-flat, D-flat, and F in the right hand and a half note B-flat in the left hand.

15

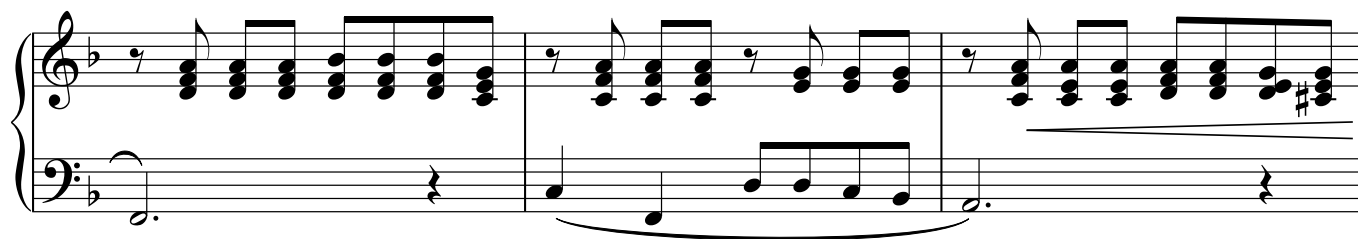
Measures 15-18 of the piano piece. The key signature is one flat (B-flat). The time signature is common time (C). The tempo is Andante, with a quarter note equal to 85 beats per minute. The fifteenth measure has a chord of B-flat, D-flat, and F in the right hand and a half note B-flat in the left hand. The sixteenth measure has a chord of B-flat, D-flat, and F in the right hand and a half note B-flat in the left hand. The seventeenth measure has a chord of B-flat, D-flat, and F in the right hand and a half note B-flat in the left hand. The eighteenth measure has a chord of B-flat, D-flat, and F in the right hand and a half note B-flat in the left hand.

19

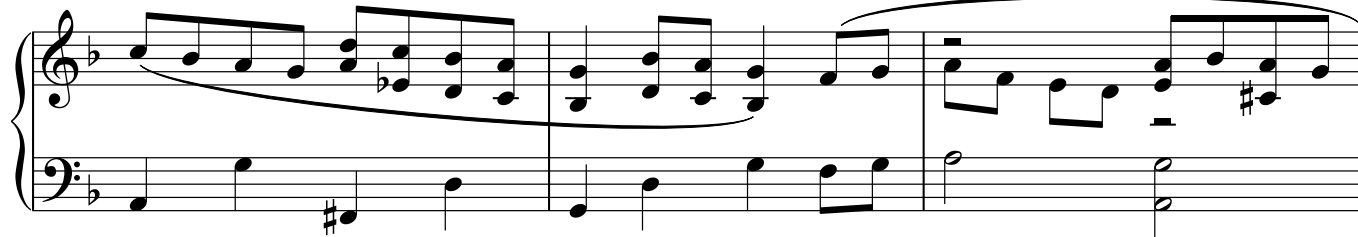
3

Measures 19-22 of the piano piece. The key signature is one flat (B-flat). The time signature is common time (C). The tempo is Andante, with a quarter note equal to 85 beats per minute. The nineteenth measure has a chord of B-flat, D-flat, and F in the right hand and a half note B-flat in the left hand. The twentieth measure has a chord of B-flat, D-flat, and F in the right hand and a half note B-flat in the left hand. The twenty-first measure has a chord of B-flat, D-flat, and F in the right hand and a half note B-flat in the left hand. The twenty-second measure has a chord of B-flat, D-flat, and F in the right hand and a half note B-flat in the left hand.

22



25



28

