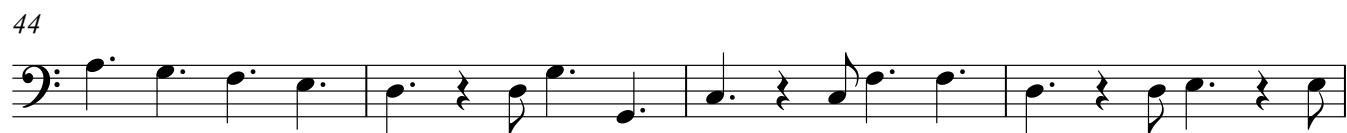
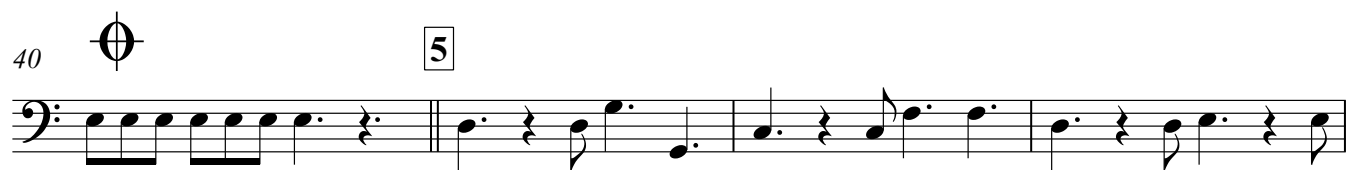
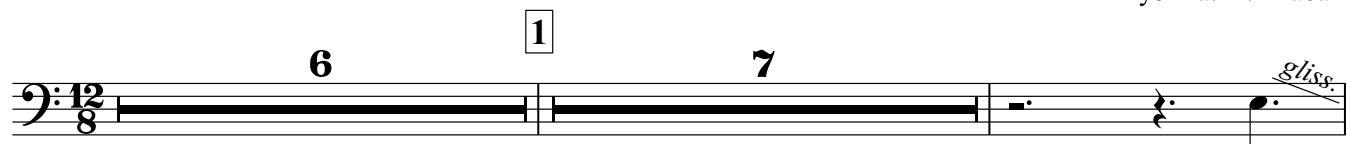


4-saitige Bassgitarre

(Мужской хор)
Я знаю Господа

Музыка: П. Шабан



V.S.

The musical notation for the bass staff shows four measures. The first measure contains a dotted quarter note G2, followed by a quarter rest, then an eighth note F2, and a dotted half note E2. The second measure starts with a dotted quarter note D2, followed by a quarter rest, then an eighth note C2, and a dotted half note B1. The third measure begins with a dotted quarter note A1, followed by a quarter rest, then an eighth note G1, and a dotted half note F1. The fourth measure consists of a dotted quarter note E1, followed by two dotted half notes D1 and C1.

The bass line of 'The Rose Tree' is written on a single staff in bass clef. It consists of four measures. The first measure contains a dotted quarter note G2, an eighth rest, a quarter note A2, and a dotted quarter note G2. The second measure contains a dotted quarter note F2, an eighth rest, a quarter note G2, and a dotted quarter note F2. The third measure contains a dotted quarter note E2, an eighth rest, a quarter note F2, and a dotted quarter note E2. The fourth measure contains a dotted quarter note D2, an eighth rest, a quarter note E2, and a dotted quarter note D2.

The first system of the bass line consists of four measures. The notes are: G2 (half note), F2 (half note), E2 (half note), and D2 (half note). The first measure has a fermata over the G2. The second measure has a fermata over the F2. The third measure has a fermata over the E2. The fourth measure has a fermata over the D2.

67

gliss

1.

The bass line of 'The Rose Tree' is written on a single staff in bass clef. It consists of two measures. The first measure contains a dotted quarter note on G2, an eighth rest, an eighth note on A2, a dotted quarter note on B2, and a half note on C3. The second measure contains a dotted quarter note on B2, an eighth rest, an eighth note on A2, a dotted quarter note on G2, and a half note on F2. The key signature has one sharp (F#), and the time signature is 4/4.

78 *gliss.* *gliss.* *molto rit.*