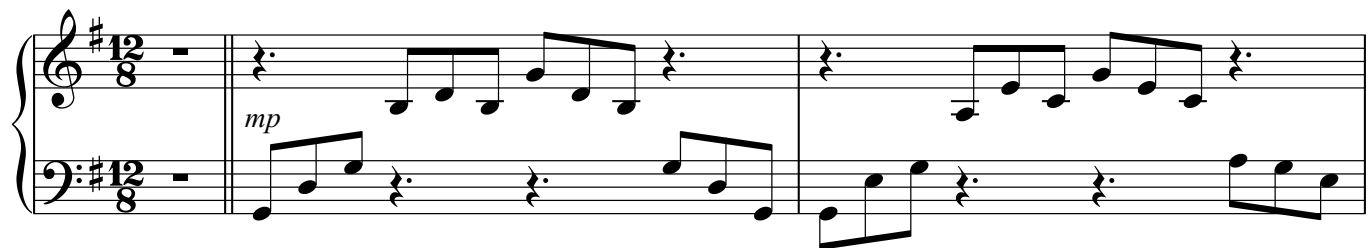


Дни светлого детства

Piano

Слова и музыка К.Н.

Con anima



20

Measures 20-22 of a piano piece. The key signature is one sharp (F#) and the time signature is 6/8. Measure 20 starts with a whole rest in the treble and a half note in the bass. Measure 21 has a 12-measure rest in the treble and a half note in the bass. Measure 22 has a 6-measure rest in the treble and a half note in the bass.

23

Measures 23-26 of a piano piece. The key signature is one sharp (F#) and the time signature is 6/8. Measure 23 has a 6-measure rest in the treble and a half note in the bass. Measure 24 has a 12-measure rest in the treble and a half note in the bass. Measure 25 has a first ending (1.) with a 6-measure rest in the treble and a half note in the bass. Measure 26 has a second ending (2.) with a 6-measure rest in the treble and a half note in the bass, marked *mp*.

27

Measures 27-30 of a piano piece. The key signature is one sharp (F#) and the time signature is 6/8. Measure 27 has a third ending (3.) with a 6-measure rest in the treble and a half note in the bass. Measure 28 has a 6-measure rest in the treble and a half note in the bass, marked *f*. Measure 29 has a 6-measure rest in the treble and a half note in the bass. Measure 30 has a 6-measure rest in the treble and a half note in the bass.

30

Measures 30-32 of a piano piece. The key signature is one sharp (F#) and the time signature is 6/8. Measure 30 has a 6-measure rest in the treble and a half note in the bass. Measure 31 has a 6-measure rest in the treble and a half note in the bass. Measure 32 has a 6-measure rest in the treble and a half note in the bass.

32

Measures 32-35 of a piano piece. The key signature is one sharp (F#) and the time signature is 6/8. Measure 32 has a 6-measure rest in the treble and a half note in the bass. Measure 33 has a 12-measure rest in the treble and a half note in the bass. Measure 34 has a 6-measure rest in the treble and a half note in the bass. Measure 35 has a 6-measure rest in the treble and a half note in the bass.