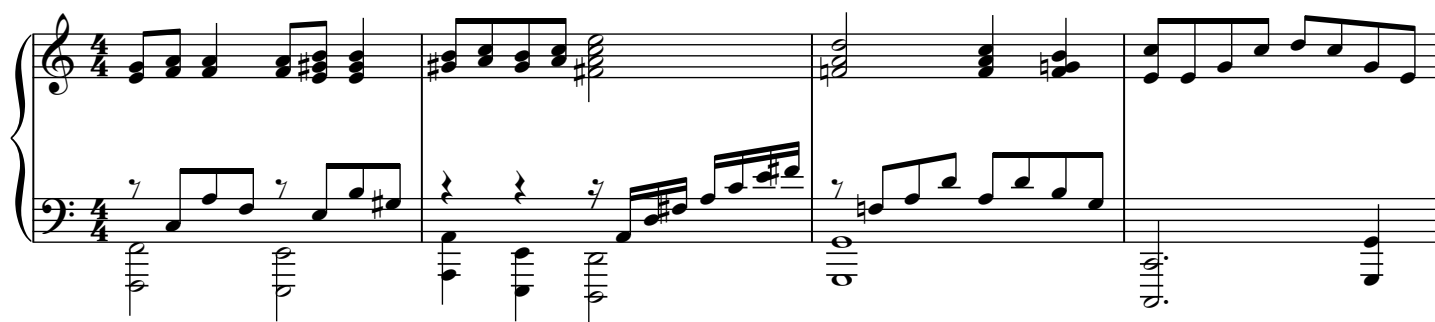


Piano

Слышал кто о воскресении?

сл. и муз. Воробьев С.



21

This system contains measures 21 through 24. The treble clef staff features a series of chords and eighth-note patterns. The bass clef staff has a melodic line with eighth notes and rests, accompanied by a steady eighth-note accompaniment. Measure 23 includes a double bar line and a repeat sign.

25

This system contains measures 25 through 28. Measures 25 and 26 are marked with a first ending bracket (1.). Measures 27 and 28 are marked with a second ending bracket (2.). The treble clef staff shows a melodic line with eighth notes. The bass clef staff provides a harmonic accompaniment with chords and eighth notes.

29

This system contains measures 29 through 33. The treble clef staff features a continuous melodic line with eighth notes. The bass clef staff has a steady eighth-note accompaniment with chords. Measure 33 ends with a double bar line.

34

This system contains measures 34 through 37. The treble clef staff shows a melodic line with eighth notes and chords. The bass clef staff has a melodic line with eighth notes and rests, accompanied by a steady eighth-note accompaniment. Measure 37 includes a double bar line and a repeat sign.

38

This system contains measures 38 through 41. The treble clef staff features a melodic line with eighth notes and chords. The bass clef staff has a melodic line with eighth notes and rests, accompanied by a steady eighth-note accompaniment. Measure 41 ends with a double bar line.