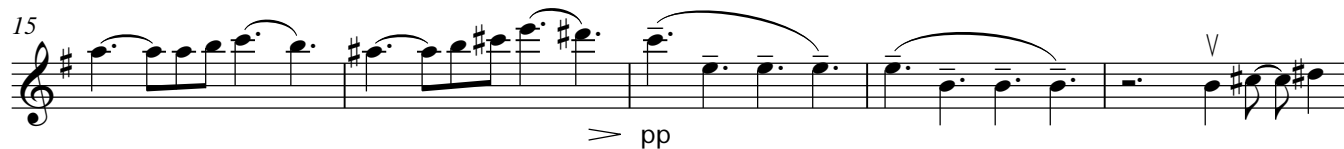
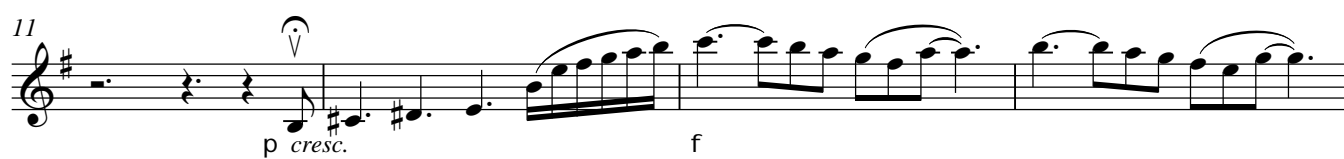


## Violin 1

## Любовь моя

Andante q.=70



32 *mp cresc.* *p*

35 *mf*

37 *p*

41 *mf*

45 *p*

49

52 *p* *mf*

55

57 *f* *f*

61 *pp*

66 *p*

68

Detailed description: This musical score is for a single melodic line in treble clef, key of D major (indicated by two sharps). It spans measures 32 to 68. The notation includes various dynamics such as *mp cresc.*, *p*, *mf*, *f*, and *pp*. There are numerous phrasing slurs, accents, and articulation marks (like 'v' for breath or 'v' for bow). The melody is characterized by many eighth and sixteenth notes, often beamed together. Measure 32 starts with a half rest followed by a sixteenth note. Measure 37 has a half rest. Measure 41 has a half rest. Measure 45 has a half rest. Measure 49 has a half rest. Measure 52 has a half rest. Measure 55 has a half rest. Measure 57 has a half rest. Measure 61 has a half rest. Measure 66 has a half rest. Measure 68 has a half rest. The score is written on ten staves, with measure numbers 32, 35, 37, 41, 45, 49, 52, 55, 57, 61, 66, and 68 marked at the beginning of their respective staves.

70

72

74

mf

77

p

80

f

82

rit.

Detailed description: This page contains six staves of musical notation in treble clef, key of D major. The notation consists of eighth-note runs with slurs, half-note rests, and dynamic markings. The dynamics are mf (measures 74-75), p (measures 77-78), f (measures 80-81), and rit. (measures 82-83). The notation is written in a standard musical score format with a key signature of one sharp (F#) and a common time signature.