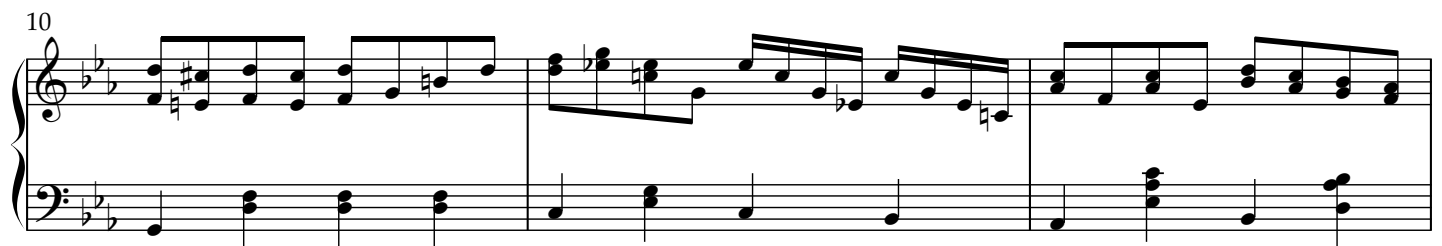
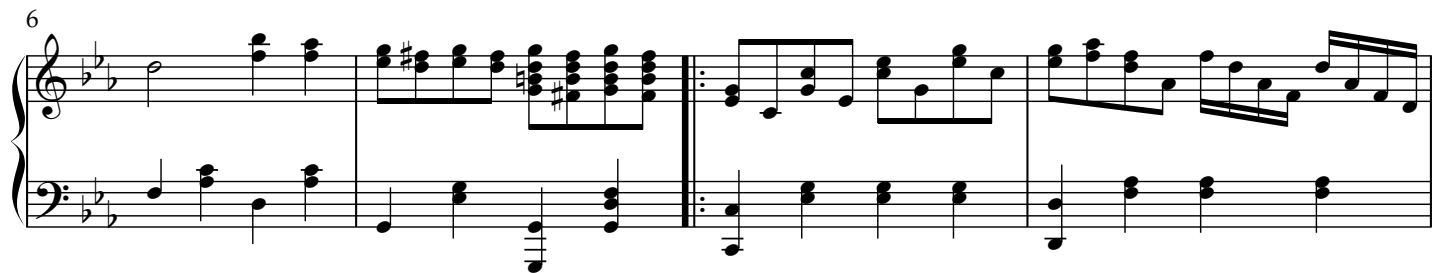
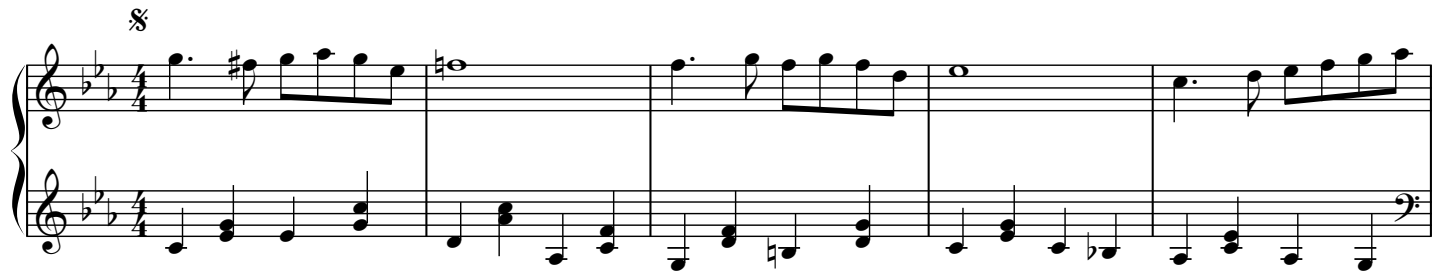


От высот небесных

Piano

Л. Васенина

С. Довжик



2

16

Measures 16-18 of a musical score in G-flat major (three flats). The right hand features a melody with eighth and sixteenth notes, while the left hand provides a harmonic accompaniment with chords and moving lines.

19

Measures 19-21 of the musical score. The right hand continues the melodic line with more complex rhythmic patterns, including sixteenth-note runs. The left hand maintains the harmonic support.

22

Measures 22-24 of the musical score. Measure 22 includes a fermata over a chord in the right hand. The right hand has a more active melodic line with sixteenth notes, while the left hand remains relatively static with chords.

25

Measures 25-27 of the musical score. The right hand features a continuous sixteenth-note melody. The left hand provides a steady accompaniment with chords and moving lines.

28

To coda Φ

Measures 28-30 of the musical score, leading to a coda. The right hand continues the sixteenth-note melodic pattern. The left hand provides harmonic support with chords and moving lines.

31. 1. 2. CODA 3

The musical score for the ending of 'The Rose Tree' is written for piano. It begins with a treble clef and a key signature of two flats (B-flat and E-flat). The melody is played in the right hand, and the accompaniment is in the left hand. The score is divided into two first endings (1. and 2.) and a final section marked 'CODA'. The first ending leads to the second ending, which then leads to the coda. The piece concludes with a final measure marked '3'.

34

The musical score for measures 34-37 of 'The Swan' by Camille Saint-Saëns. The score is in 3/4 time, key of B-flat major, and features a piano accompaniment. The melody is in the right hand, and the bass line is in the left hand. The music is marked 'p' (piano) and 'f' (forte).

37

38

39

40

The musical score for measures 40-42 of 'The Swan' by Camille Saint-Saëns. The score is in 3/4 time, key of B-flat major, and features a piano accompaniment. Measure 40 shows a complex piano figure in the right hand and a simple bass line in the left. Measure 41 continues the piano figure. Measure 42 shows a change in the piano figure and a more active bass line.

43



43