

37.Christmas Worship

♩=112

[illegible]

5 A

9 **B**

The musical notation for the bass staff shows a sequence of notes across four measures. The first measure contains a dotted quarter note G2, an eighth note F2, and a half note E2. The second measure contains a dotted quarter note D2, an eighth note C2, and a half note B1. The third measure contains a dotted quarter note A1, an eighth note G1, and a half note F1. The fourth measure contains a dotted quarter note E1, an eighth note D1, and a half note C1. The key signature has one flat (B-flat), and the time signature is common time (C).

13 C

D

4

Musical notation for the bass line of 'The Rose Tree'. The key signature has one flat (B-flat). The melody consists of the following notes: a whole rest, a half note G2, a half note F2, a quarter note E2, a quarter note D2, a quarter note C2, a quarter note B1, a quarter note A1, a quarter note G1, a quarter note F1, a quarter note E1, a quarter note D1, a quarter note C1, a quarter note B0, a quarter note A0, and a quarter note G0.

21 **E**

[illegible]25 **F**

4

The bass line of 'The Rose Tree' is written in 2/4 time. It begins with a whole rest, followed by a half note G2, a half note F2, a quarter note E2, and a quarter note D2. The melody is then repeated twice, each time starting with a whole rest followed by a half note G2, a half note F2, a quarter note E2, and a quarter note D2.

31 **G** ♩=104

H

7

9

A musical staff with a bass clef and a repeat sign. The staff is empty, with only the clef and the repeat sign visible.

47 **I**

50

54 **J**

61

K

66

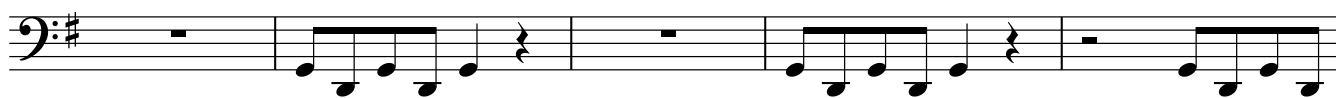


70

♩=135

**L**

76



81

Fine

86

M

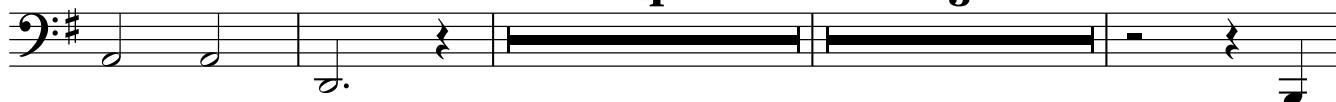
92

N

4

O

3



Tuba in B

³
D.S. al Fine

102

P

1.

2.

