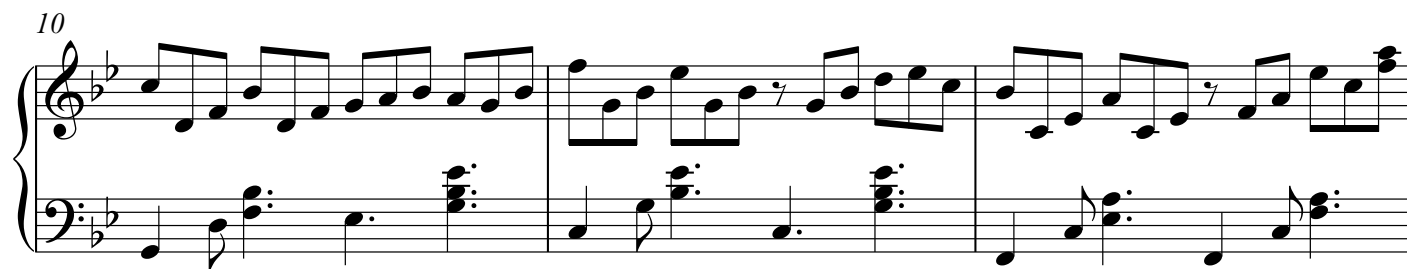
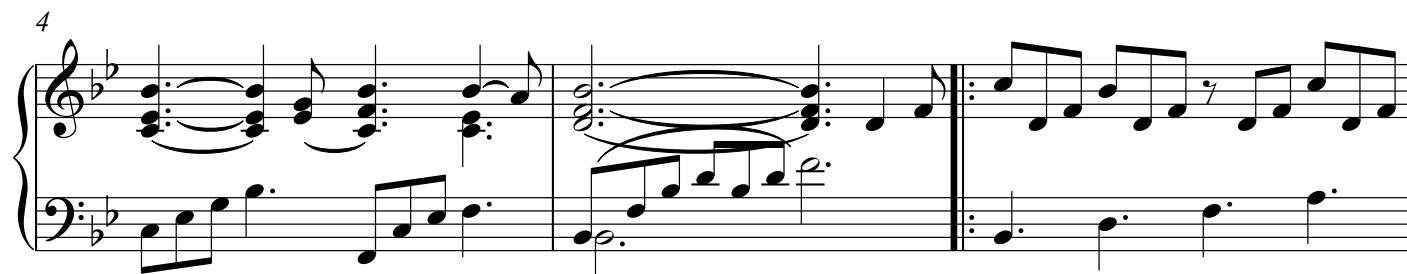


PIANO

Г. Авраменко

# Небеса мои

В. Лашук



16

Measures 16 and 17 of a piano piece. The key signature has two flats (B-flat and E-flat). Measure 16 features a treble staff with eighth-note chords and a bass staff with a walking bass line. Measure 17 continues the pattern with some rests in the treble staff.

18

Measures 18, 19, and 20. Measure 18 has a treble staff with eighth-note chords and a bass staff with a walking bass line. Measure 19 continues the pattern. Measure 20 features a treble staff with a whole note chord and a bass staff with a walking bass line.

21

Measures 21, 22, and 23. Measure 21 starts with a first ending bracket (1.2.) over a treble staff with eighth-note chords and a bass staff with a walking bass line. Measure 22 continues the pattern. Measure 23 features a treble staff with a whole note chord and a bass staff with a walking bass line, ending with a repeat sign.