

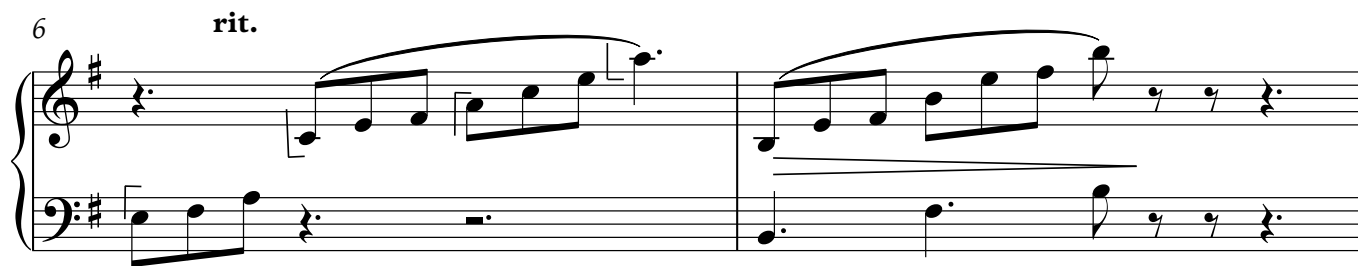
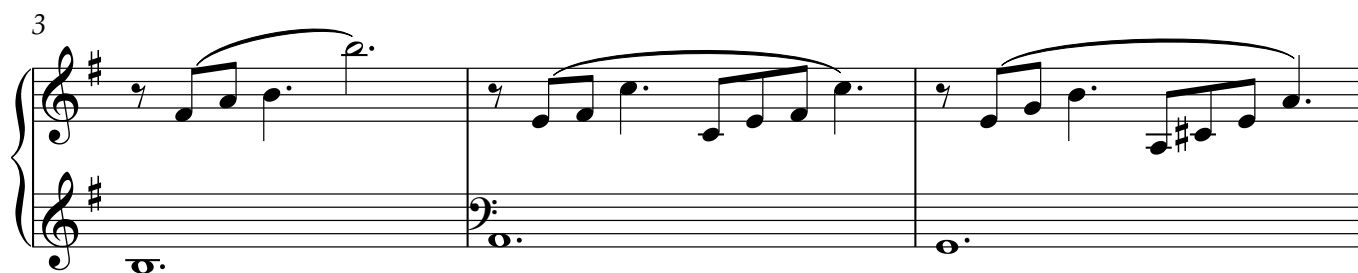
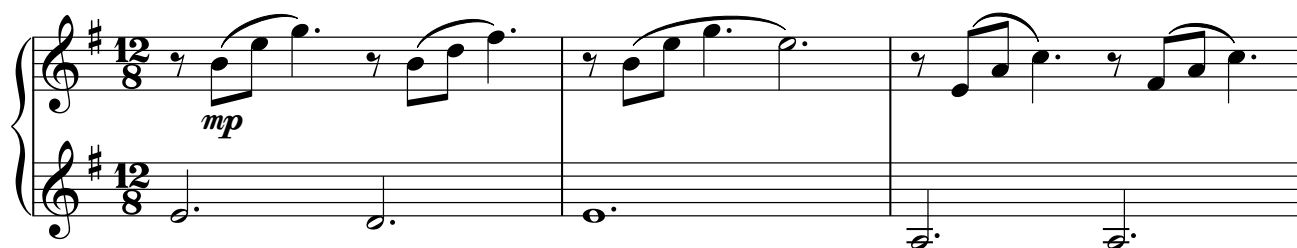
Piano

НЕЗАМЕТНО ПРИШЛА ЗОЛОТАЯ НЕЖДАННАЯ ОСЕНЬ

А. Гордеев

Arranžeerija Ernest Elnathan

Con anima



2

Piano

1.2. **rit.**

13

Measures 13-15 of a piano piece. The key signature has one sharp (F#). Measure 13: Treble clef has a quarter rest, followed by eighth notes G4, A4, B4, C5, and a dotted quarter B4. Bass clef has a dotted half note G3. Measure 14: Treble clef has a quarter rest, followed by eighth notes A4, B4, C5, and a dotted quarter B4. Bass clef has a dotted half note A3. Measure 15: Treble clef has a quarter rest, followed by eighth notes G4, A4, B4, C5, and a dotted quarter B4. Bass clef has a dotted half note G3. The system ends with a double bar line.

16

3.

2

Measures 16-17 of a piano piece. Measure 16: Treble clef has a quarter rest, followed by eighth notes G4, A4, B4, C5, and a dotted quarter B4. Bass clef has a dotted half note G3. Measure 17: Treble clef has a quarter rest, followed by eighth notes A4, B4, C5, and a dotted quarter B4. Bass clef has a dotted half note A3. The system ends with a double bar line.

18

rit.

Measures 18-21 of a piano piece. Measure 18: Treble clef has a quarter rest, followed by eighth notes G4, A4, B4, C5, and a dotted quarter B4. Bass clef has a dotted half note G3. Measure 19: Treble clef has a quarter rest, followed by eighth notes A4, B4, C5, and a dotted quarter B4. Bass clef has a dotted half note A3. Measure 20: Treble clef has a quarter rest, followed by eighth notes G4, A4, B4, C5, and a dotted quarter B4. Bass clef has a dotted half note G3. Measure 21: Treble clef has a dotted half note G4. Bass clef has a dotted half note G3. The system ends with a double bar line.